

## CHAPTER EIGHT – GEORGE PIERCE MCGEE FAMILY

### *Generation No. 3*

**1. GEORGE PIERCE<sup>3</sup> MCGEE** (*JOHN SIMPSON<sup>2</sup>, JOHN<sup>1</sup>*) was born July 10, 1856 in the state of Texas, and died November 21, 1937 in Hart County, Kentucky. He married **ROSA LEE VANCE** May 08, 1878, daughter of LUCIAN VANCE and LOUISA SPRYGLEY. She was born July 13, 1861 in Greensburg, Greene County, Kentucky, and died September 25, 1934 in Hart County, Kentucky.

Notes for GEORGE PIERCE MCGEE:

George Pierce McGee was the namesake of George F. Pierce (1811-1884) a widely popular bishop in the Methodist Episcopal Church, South elected in 1854. George F. Pierce was born in Georgia, the son of a Methodist minister. In 1845, in Louisville, Kentucky, he helped to organize the M. E. Church, South which resulted from the schism within the church over slavery. He was ordained by Bishop James Osgood Andrew, the same church official who ordained Rev. John McGee.

*The 1910 census for Horse Cave, Hart County, Kentucky lists **George P. McGee**, age 50, head of the household, a commercial salesman, his wife, Rose L., age 48, a son, Lucien, age 25, single, a salesman, and a son, Huston, age 22, a salesman. Also listed in the household was a servant, Virgie Hughes, age 25, and a widow. The couple had been married for approximately 30 years, and five of their six children were still living. Living in the home immediately next door was another son, Lewis McGee and his family.*

(Note: The servant, Virgie Hughes, listed above was actually Virginia McGee, the niece of George P. McGee. She was the daughter of George's brother, William Dempsey McGee and had recently lost her husband. She was probably working as a housekeeper to help support herself and her two young children.)

*The 1920 census for Hart County, Kentucky lists **George P. McGee**, age 63, head of the household, a traveling salesman, his wife, Rosa L., age 58, and a son, Edd P., age 26, a clerk in a grocery store. The family resided on Church Street in Horse Cave. Living in the same household were their daughter, Pearl Moran, and her husband.*

In 1930, George and Rose McGee were still living in the same household with their daughter and son-in-law, Pearl and Charlie Moran in Horse Cave, Kentucky.

#### SUMMONED IN SLEEP

The death of Mr. Geo. P. McGee, at his home in Horse Cave, at an early hour Sunday morning brought sadness to Horse Cave. Mr. McGee was 81 years young, celebrating his birthday July 10. He was active until the last and answered the final summon, as he had expressed his wish on many occasions, without an apparent struggle or pain.

When his granddaughter-in-law, Mrs. Sallie Moran, went to his room Sunday morning to light the fire so that he might not be forced to dress in the cold she found that he was dead. The bed covers were in place and he was lying in the same position which she had left him when last in the room shortly before midnight.

Mr. McGee had been suffering from a severe cold for two or three days and had been down town Saturday, returning home in the early evening. He enjoyed mingling with his friends and his friends enjoyed his friendship and will miss his greetings from day to day.

Funeral services were conducted at the residence Monday afternoon by Rev. V. P. Henry, burial in the Horse Cave cemetery.

Mr. McGee is survived by a daughter, Mrs. C. B. Moran of Horse Cave; three sons, Lewis of Louisville, Houston and Ed McGee of Horse Cave.

**More About GEORGE PIERCE MCGEE:**

**Burial: Horse Cave Cemetery, Hart County, Kentucky**

**More About ROSA LEE VANCE:**

**Burial: Horse Cave Cemetery, Hart County, Kentucky**

Children of GEORGE MCGEE and ROSA VANCE are:

2. i. **ETTA PEARL<sup>4</sup> MCGEE**, b. August 07, 1880, Uno, Hart County, Kentucky; d. December 18, 1958, Hart County, Kentucky.
3. ii. **LUCIAN BASCOM MCGEE**, b. December 16, 1884, state of Kentucky; d. October 27, 1917, state of Missouri.
4. iii. **JAMES LOUIS MCGEE**, b. December 02, 1886, state of Kentucky; d. May 19, 1943.
5. iv. **JOHN HOUSTON MCGEE**, b. September 28, 1888, Uno, Hart County, Kentucky; d. January 05, 1977, Glasgow, Barren County, Kentucky.
- v. **EDD PIERCE MCGEE**, b. June 11, 1892, Hart County, Kentucky; d. November 23, 1959, V.A. Hospital, Lexington, Fayette County, Kentucky; m. **PERNIECIA JANE PRITCHARD**, Abt. 1921; b. 1895, Horse Cave, Hart County, Kentucky; d. August 20, 1955, Hart County, Kentucky.

Notes for EDD PIERCE MCGEE:

*The 1930 census for Horse Cave, Hart County, Kentucky lists Edd P. McGee, age 38, head of the household, employed as a grocery salesman, and his wife, Pernicia, age 34.*

EDD P. MCGEE, 67, Dies In VA Hosp. (The Hart County News, Munfordville, Ky., November 26, 1959).

Edd Pierce McGee, 67, former grocer in Horse Cave, died at 4:45 p.m. Monday at Veterans Hospital, Lexington, following a heart attack suffered Sunday. His condition was complicated by pneumonia.

He was a veteran of World War I. For several years he was associated with his brother, J. Houston McGee, in a grocery in Horse Cave. He was married to the former Perniece Pritchard of Horse Cave, who passed away about two years ago.

He was the son of the late George P. and Rosa Vance McGee. Survivors include his brother and several nieces and nephews.

The body was brought to Winn Funeral Home in Horse Cave, where the funeral was to be held at 2 p.m. Wednesday, Rev. Avery Wheat of the Methodist Church officiating. Burial was in Horse Cave Cemetery.

**More About EDD PIERCE MCGEE:**

**Burial: Horse Cave Cemetery, Hart County, Kentucky**

**Occupation: Grocer**

Notes for **PERNIECIA JANE PRITCHARD**:

**MRS. E. P. MCGEE, 59, Of Horse Cave Died Sat.:** Rites Monday (The Cave City Progress, Cave City, Ky., August 26, 1955)

Mrs. Perniecia Pritchard McGee, 55, prominent in club and civic affairs at Horse Cave for a number of years, died at her home there at noon Saturday following several months illness.

Mrs. McGee was active in the Horse Cave Woman's Club, Hermosa Club and the Methodist Church.

Surviving are her husband, Edward P. McGee, Lexington; her parents, Mr. and Mrs. Harley Pritchard; two brothers, Henry and Stanley Pritchard; all of Horse Cave; five sisters, Mrs. Gladys Long, Portland, Oregon; Mrs. Katherine Helmus, Mrs. Louise Hoffman, Mrs. Anna Lewis Thompson, all of Louisville; Mrs. Viola Richey, Horse Cave.

Funeral services were conducted Monday afternoon at the Horse Cave Methodist Church with burial in the Horse Cave Cemetery under the direction of Winn Funeral Home. Rev. J. Roscoe Tarter, pastor, officiated.

More About **PERNIECIA JANE PRITCHARD**:

Burial: Horse Cave Cemetery, Hart County, Kentucky

- vi. **JOUETTE KATZ MCGEE**, b. June 30, 1893, Hart County, Kentucky; d. August 08, 1893, Hart County, Kentucky.

More About **JUETTE KATZ MCGEE**:

Burial: Horse Cave Cemetery, Hart County, Kentucky

#### *Generation No. 4*

**2. ETTA PEARL<sup>4</sup> MCGEE** (*GEORGE PIERCE<sup>3</sup>, JOHN SIMPSON<sup>2</sup>, JOHN<sup>1</sup>*) was born August 07, 1880 in Uno, Hart County, Kentucky, and died December 18, 1958 in Hart County, Kentucky. She married **CHARLIE BARTHELL MORAN** December 12, 1898 in Bowling Green, Warren County, Kentucky, son of **THOMAS MORAN** and **ALLENE WILLIAMS**. He was born February 22, 1878 in Nashville, Davidson County, Tennessee, and died June 14, 1949 in Horse Cave, Hart County, Kentucky.

Notes for **ETTA PEARL MCGEE**:

**MRS. PEARL MORAN DIES THIS MORNING** (The Hart County Herald, Horse Cave, Ky., December 18, 1958)

Mrs. Pearl McGee Moran, 78, widow of the late C. B. "Uncle Charlie" Moran, died at her home in Horse Cave this morning about six o'clock after a few hours illness. She had been in poor health for several months and suffered a slight stroke yesterday morning. She was a member of the Horse Cave Methodist Church.

Surviving are one granddaughter, Mrs. Jimmie McCurry, of 823 10th Street, Santa Monica, Calif.; one great grandson, Tommie Moran, of Troop, Texas; and three great grandchildren, Jimmie, Bob and Don McCurry; and a daughter-in-law, Mrs. Tommie Moran, who made her home with her; two brothers, Mr. Houston McGee, Horse Cave, and Mr. Eddie McGee, and several nieces and nephews.

Funeral services will be held at 2 o'clock tomorrow afternoon at the Winn Funeral Chapel, Rev. Avery Wheat, assisted by Bro. Thomas Omer, will have charge.

The family requests that all donations for flowers be given to the Cancer Drive. The body will be in the chapel of Winn's Funeral Home at six o'clock this evening.

More About **ETTA PEARL MCGEE**:

Burial: Horse Cave Cemetery, Hart County, Kentucky

Notes for **CHARLIE BARTHELL MORAN**:

Ann (Moran) McCurry contributed the following information about her grandfather, Charlie B. Moran:

“Charlie B. Moran led a very colorful life. He coached college football at Texas A&M, Centre College, Catawba, Bucknell, and Carlisle Indian School. He coached professional football at the Dallas Athletic Club and the Philadelphia Frankford Yellowjackets. He was also a professional baseball player and National League umpire from 1917-1939. He received the following recognitions from Texas A&M, Catawba and Centre College:

Texas A&M Athletic Hall of Fame – “Charles B. “Uncle Charlie” Moran. Athletic Director and Head Coach of football, baseball and track – 1908-1914. Elected November 16, 1968.”

Catawba College & Catawba Chief’s Club – “Present an Outstanding Achievement Award to Charles B. Moran (1878-1949). Head football coach 1930-1933. Presented Friday, November 9, 1984.”

Centre College Athletic Hall of Fame – “1992 Inductee Charlie Barthell Moran. “Uncle Charlie” enjoyed an unusually productive career in athletics. He coached Centre College football (1917-23) including the 6-0 victory over Harvard, October 29, 1921.”

*The 1910 census for Brazos County, Texas lists Charles B. Moran, age 31, head of the household, employed as a college coach. his wife, **Pearl E.**, age 29, and a son, Tom M., age 11.*

*The 1920 census for Horse Cave, Hart County, Kentucky lists Charles B. Moran, age 41, athletic coach, his wife, **Pearl E.**, age 38, a son, Tom, age 20, employed as a laborer in a tobacco barn, and a daughter-in-law, Salie, age 17. Living in the same household were Pearl's parents, George and Rose McGee.*

*The 1930 census for Horse Cave, Hart County, Kentucky lists Charlie B. Moran, age 54, head of the household, a baseball umpire, his wife, **Pearl M.**, age 49, a son, Tom, age 30, employed as a tobacco buyer, a daughter-in-law, Sallie B., age 27, a grandson, Charlie B., Jr., age 5, a father-in-law, George P. McGee, age 73, and a mother-in-law, Rosa McGee, age 68. The family residence was on Church Street.*

MR. CHAS. B. MORAN DIED AT HIS HOME TUESDAY, JUNE 14TH (from the Hart County News, June 16, 1949)

Mr. Charles B. "Uncle Charley" Moran, famed National League umpire and Centre College football coach, died Tuesday at his home in Horse Cave. He had been suffering from a heart ailment and was bedfast the past three weeks.

The funeral services were conducted Wednesday afternoon at the home. Burial was in Horse Cave Cemetery. The Rev. Thomas Morrison, Methodist pastor, was in charge of the services.

He is survived by his wife, Mrs. Pearl Moran; a daughter-in-law, Mrs. Sally Moran; a granddaughter, Miss Ann Moran; a grandson, Lt. Charles B. Moran II, now in Japan; and a great-grandson.

Moran was Kentucky's unique figure in the sports world. Born in Nashville, Tenn. in 1878, Moran was a football player and coach, baseball player and manager and finally, an umpire.

He retired in 1939 as a National League umpire after spending 23 of his 60 years as an arbiter with that circuit. At the time of his death Mr. Moran was 71 years of age.

Far from the booming cry of "play ball" Moran lived a life of a gentleman farmer after his retirement as an umpire. He had had a farm near Horse Cave since 1919.

More About CHARLIE BARTHELL MORAN:

Burial: Horse Cave Cemetery, Hart County, Kentucky

Occupation: College Coach, Major League Baseball Umpire

Child of ETTA MCGEE and CHARLIE MORAN is:

6. i. **TOM MCGEE<sup>5</sup> MORAN**, b. December 10, 1899, Nashville, Davidson County, Tennessee; d. July 04, 1933, Horse Cave, Hart County, Kentucky.

**3. LUCIAN BASCOM<sup>4</sup> MCGEE** (*GEORGE PIERCE<sup>3</sup>, JOHN SIMPSON<sup>2</sup>, JOHN<sup>1</sup>*) was born December 16, 1884 in the state of Kentucky, and died October 27, 1917 in the state of Missouri. He married **UNKNOWN**.

More About LUCIAN BASCOM MCGEE:

Burial: state of Missouri

Child of LUCIAN MCGEE and UNKNOWN is:

- i. **SHIRLEY VANCE<sup>5</sup> MCGEE**, d. January 13, 1980, state of Missouri; m. ROBERT ?.

**4. JAMES LOUIS<sup>4</sup> MCGEE** (*GEORGE PIERCE<sup>3</sup>, JOHN SIMPSON<sup>2</sup>, JOHN<sup>1</sup>*) was born December 02, 1886 in state of Kentucky, and died 1943. He married **JENNIE PAGE** abt. 1908. She was born 1880 in the state of Kentucky, and died November 16, 1924 in Hart County, Kentucky.

Notes for JAMES LOUIS MCGEE:

*The 1910 census for Horse Cave, Hart County, Kentucky listed **Lewis McGee**, age 23. a salesman for a drugstore and head of the household, his wife, Jennie, age 25, and a brother, Eddie, age 18. Also listed as part of the household was Virgie Hughes, age 25, a servant.*

(Note: Virgie Hughes' name appears three times in the 1910 Hart County census under three separate households. In addition to Lewis McGee, she was also listed in the household of her uncle, George P. McGee and that of her father, William D. McGee. Virginia (McGee) Hughes had recently been widowed and left with two young children. She and the children resided with her father, but she probably worked as housekeeper for her Uncle George and her cousin Lewis.)

*The 1920 census for Horse Cave, Hart County, Kentucky lists **J. Lewis McGee**, age 33, head of the household and a drugstore pharmacist, his wife, Jennie P., age 37, and a son, Thomas P., age 7. Also living in the household was Cora Page, age 58, mother-in-law.*

Louis McGee's wife, Jennie, died on November 16, 1924, in Hart County. Sometime after her death but before 1930, Louis and his son moved to Louisville, Kentucky.

*The 1930 census for District No. 6, Louisville, Jefferson County, Kentucky lists **James L. McGee**, age 42, a widower, employed as a salesman for rupture appliances; and his son, Thomas P., age 17. They rented their home which was located on South Second Street.*

More About JAMES LOUIS MCGEE:

Burial: Horse Cave Cemetery, Hart County, Kentucky

More About JENNIE PAGE:

Burial: Horse Cave Cemetery, Hart County, Kentucky

Child of JAMES MCGEE and JENNIE PAGE is:

7. i. **THOMAS PAGE<sup>5</sup> MCGEE**, b. April 15, 1912, Horse Cave, Hart County, Kentucky; d. Abt. 1955, Indianapolis, Indiana.

**5. JOHN HOUSTON<sup>4</sup> MCGEE** (*GEORGE PIERCE<sup>3</sup>, JOHN SIMPSON<sup>2</sup>, JOHN<sup>1</sup>*) was born September 28, 1888 in Uno, Hart County, Kentucky, and died January 05, 1977 in Glasgow, Barren County, Kentucky. He married **MARY AGNES RHEA** abt. 1910. She was born December 11, 1889 in the state of Kentucky, and died May 15, 1969 in Jefferson County, Kentucky.

Notes for JOHN HOUSTON MCGEE:

*The 1920 census for Horse Cave, Hart County, Kentucky lists **J. Huston McGee**, age 31, head of the household and employed as a grocery merchant, his wife, Mary A., age 30, a daughter, Frances L., age 7, and a son, Rhea B., age 3.*

*The 1930 census for Horse Cave, Hart County, Kentucky lists **J. Huston McGee**, age 41, head of the household, employed as a grocery merchant, his wife, Mary A., age 39, a daughter, Frances L., age 17, a son, Rhea B., age 13, and a son, J. Huston, Jr., age 5.*

More About JOHN HOUSTON MCGEE:

Burial: Horse Cave Cemetery, Hart County, Kentucky

Occupation: Grocery Merchant

More About MARY AGNES RHEA:

Burial: Horse Cave Cemetery, Hart County, Kentucky

Children of JOHN MCGEE and MARY RHEA are:

8. i. **FRANCES LEE<sup>5</sup> MCGEE**, b. May 02, 1912, Hart County, Kentucky; d. December 18, 1995, Glasgow, Barren County, Kentucky.
9. ii. **RHEA BARTHELL MCGEE**, b. July 20, 1916, Hart County, Kentucky; d. January 22, 1971, Louisville, Jefferson County, Kentucky.
10. iii. **JOHN HOUSTON MCGEE, JR.**, b. May 30, 1924, Hart County, Kentucky; d. May 27, 1975.

#### *Generation No. 5*

**6. TOM MCGEE<sup>5</sup> MORAN** (*ETTA PEARL<sup>4</sup> MCGEE, GEORGE PIERCE<sup>3</sup>, JOHN SIMPSON<sup>2</sup>, JOHN<sup>1</sup>*) was born December 10, 1899 in Nashville, Davidson County, Tennessee, and died July 04, 1933 in Horse Cave, Hart County, Kentucky. He married **SALLIE BRYANT** November 1918 in Jeffersonville, Indiana, daughter of JOHN BRYANT and LULU DICKEY. She was born June 09, 1902 in Barren County, Kentucky, and died November 15, 1987 in Torrance, California.

Notes for TOM MCGEE MORAN:

*The 1930 census for Horse Cave, Hart County, Kentucky lists **Tom McGee Moran**, age 30, and*

*his family living in the residence of his parents, Charlie B. and Pearl Moran. His grandparents, George and Rosa McGee were also living in the home.*

Tom Moran played football for the famous Centre College "Praying Colonels" from 1917 to 1921. His father, Charlie B. Moran, was Centre's coach during that same period, and the team will always be remembered for their upset of previously unbeaten Harvard in 1921 by the score of 6 - 0. Later Tom played for the New York Giants pro football team 1923 - 1925 and was a football coach for Carson Newman until 1931.

More About TOM MCGEE MORAN:

Burial: Horse Cave Cemetery, Hart County, Kentucky

Occupation: Football Coach, Tobacco Salesman

More About SALLIE BRYANT:

Burial: Horse Cave Cemetery, Hart County, Kentucky

Children of TOM MORAN and SALLIE BRYANT are:

11. i. **CHARLIE BARTHELL<sup>6</sup> MORAN II**, b. April 17, 1924, Horse Cave, Hart County, Kentucky; d. August 07, 1950, Killed in action in Korea.
12. ii. **SALLIE ANN MORAN**, b. September 16, 1930, Glasgow, Barren County, Kentucky.

**7. THOMAS PAGE<sup>5</sup> MCGEE** (*JAMES LOUIS<sup>4</sup>, GEORGE PIERCE<sup>3</sup>, JOHN SIMPSON<sup>2</sup>, JOHN<sup>1</sup>*) was born April 15, 1912 in Horse Cave, Hart County, Kentucky, and died abt. 1955 in Indianapolis, Indiana. He married **CLARA M.?**

More About THOMAS PAGE MCGEE:

Burial: Louisville, Jefferson County, Kentucky

Children of THOMAS MCGEE and CLARA M. are:

- i. **THOMAS PAGE<sup>6</sup> MCGEE, JR.**
- ii. **JAMES JULIAN MCGEE.**
- iii. **PATRICIA LOUISE MCGEE.**

**8. FRANCES LEE<sup>5</sup> MCGEE** (*JOHN HOUSTON<sup>4</sup>, GEORGE PIERCE<sup>3</sup>, JOHN SIMPSON<sup>2</sup>, JOHN<sup>1</sup>*) was born May 02, 1912 in Hart County, Kentucky, and died December 18, 1995 in Glasgow, Barren County, Kentucky. She married **HENRY G. FARRIS, JR.** He was born August 08, 1911, and died March 24, 1977.

Notes for FRANCES LEE MCGEE:

Obituary for Frances Lee McGee Farris

Glasgow - Frances Lee Farris, 83, formerly of Horse Cave, died Monday, December 18, at Community Hospital. She was the widow of the late Henry Farris.

Survivors include two daughters; Judy Rhea Wells, Versailles, and Susan Lee Farris, Louisville; three granddaughters; and five great grandchildren.

Memorial services were held at 11:00 a.m. Thursday at Hatcher & Saddler Funeral Home. In lieu of flowers, the

family requests that donations be made to the Community Relief Fund, P.O. Box 191, Glasgow, Ky. 42142-0191; or the Kentucky Alliance for the Mentally Ill, 10510 LaGrange Road, Louisville, Ky. 40223.

More About FRANCES LEE MCGEE:

Burial: Horse Cave Cemetery, Hart County, Kentucky

More About HENRY G. FARRIS, JR.:

Burial: Horse Cave Cemetery, Hart County, Kentucky

Children of FRANCES MCGEE and HENRY FARRIS are:

13. i. **JUDY RHEA<sup>6</sup> FARRIS**, b. November 29, 1940, Hart County, Kentucky.
- ii. **SUSAN LEE FARRIS**, b. August 29, 1947, Barren County, Kentucky.

**9. RHEA BARTHELL<sup>5</sup> MCGEE** (*JOHN HOUSTON<sup>4</sup>, GEORGE PIERCE<sup>3</sup>, JOHN SIMPSON<sup>2</sup>, JOHN<sup>1</sup>*) was born July 20, 1916 in Hart County, Kentucky, and died January 22, 1971 in Louisville, Jefferson County, Kentucky. He married **MARGORIE MAY PATTASON**, daughter of CHARNER PATTASON and SURILDA PUCKETT. She was born December 20, 1920 in Munfordville, Hart County, Kentucky, and died June 03, 2004 in Clearwater, Florida.

Notes for RHEA BARTHELL MCGEE:

Obituary of RHEA MCGEE

Rhea McGee, 54, Cave City, died Friday, January 22, in Veterans Hospital, Louisville, after a long illness. He was a long-time businessman of this area. His mother was the late Agnes Rhea McGee. Survivors include his widow, Mrs. Marjorie Patterson McGee; one daughter, Mrs. Henry Towery, Tampa, Florida; one son, John Patterson McGee, Cave City; one grandson; his father, J. Houston McGee, Horse Cave; one brother, J. H. McGee, Jr., Horse Cave; one sister, Mrs. Henry Farris, Horse Cave. Funeral services were conducted Sunday, January 24, at 2:00 p.m. at the Waldrop Funeral Home with Rev. Carline Brown, pastor of the Cave City Methodist Church, in charge. Burial was in the Horse Cave Cemetery.

More About RHEA BARTHELL MCGEE:

Burial: Horse Cave Municipal Cemetery, Hart County, Kentucky

Children of RHEA MCGEE and MARGORIE PATTASON are:

14. i. **LIVING<sup>6</sup> MCGEE**, b. September 26, 1941, Horse Cave, Hart County, Kentucky.
- ii. **JOHN PATTASON MCGEE**, b. March 06, 1947, Mobile, Alabama.

**10. JOHN HOUSTON<sup>5</sup> MCGEE, JR.** (*JOHN HOUSTON<sup>4</sup>, GEORGE PIERCE<sup>3</sup>, JOHN SIMPSON<sup>2</sup>, JOHN<sup>1</sup>*) was born May 30, 1924 in Hart County, Kentucky, and died May 27, 1975. He married **MARY KATHERINE SCOTT**. She was born September 02, 1925.

More About JOHN HOUSTON MCGEE, JR.:

Burial: Horse Cave Cemetery, Hart County, Kentucky

Child of JOHN MCGEE and MARY SCOTT is:

15. i. **JOHN SCOTT<sup>6</sup> MCGEE**, b. May 04, 1951, Hart County, Kentucky.



*Generation No. 6*

**11. CHARLIE BARTHELL<sup>6</sup> MORAN II** (*TOM MCGEE<sup>5</sup>, ETTA PEARL<sup>4</sup> MCGEE, GEORGE PIERCE<sup>3</sup>, JOHN SIMPSON<sup>2</sup>, JOHN<sup>1</sup>*) was born April 17, 1924 in Horse Cave, Hart County, Kentucky, and died August 07, 1950, killed in action in Korea. He married **LILLIAN IMOGENE USRY** August 03, 1946 in Troup, Smith County, Texas, daughter of ERNEST USRY and CALLIE MORRIS. She was born August 12, 1924 in Troup, Smith County, Texas.

Notes for CHARLIE BARTHELL MORAN II:

The following information on Charles B. Moran II was furnished by his son, Tom Moran:

“Charlie B. Moran II finished high school in Horse Cave, Kentucky in 1942 and then attended Western State Teacher's College in Bowling Green from June 1942 until March 1943. While a college student at Western, he was a member of the ROTC. He joined the U.S. Army on April 8, 1943, began his pilot training on July 1st and, over the next several months trained at various air fields in the U.S., receiving his pilot's wings in December 1944. He then became a Flight Officer Trainee at Williams Field in Chandler, Arizona and was at that location when the war in Europe ended on June 4, 1945. After the war he was transferred to Selman Field, Monroe, Louisiana where he started flying C-47 and had night navigation training. He obtained the rank of 2nd Lt. in July 1945 and was transferred to Ellington Field, Houston, Texas where he flew C-47 and TC-47B.

“In 1948, 1<sup>st</sup> Lt. Charlie Moran was sent to Japan and was serving there when the Korean War started on June 25, 1950. He was immediately called to Korea to help with air support of civilians. On June 27, 1950, he was one of two U.S. pilots who shot down an enemy aircraft on the first day of the air war. This was done after his own F-82G tail was sprayed with bullets. The following day Charlie had a forced landing but was able to get out of his plane and was picked up by an U.S. Infantry Unit. However his plane was strafed and could not be recovered. Charlie Moran received the Air Medal with 3 Oak clusters on July 13, 1950 from General Hoyt S. Vandenberg for shooting down the enemy plane on June 27.

“On August 7, 1950, Charlie and his radar observer, Frank Meyers, were called out of a movie to replace a sick pilot on a night intruder mission. He flew a F-82G over a mountainous region of Sunchon, Korea and was never heard from again. The wreckage of their aircraft was found 18 months later, and it is believed that their plane struck a cable that had been strung across a valley. An American grave registration crew discovered a propeller blade that had the serial number of Charlie's plane. An investigation determined that the plane had come in on fire and exploded on impact. Two bodies were buried by villagers. No personal identification was found. On April 21, 1952, his status of "Missing in Action" was changed and his body was sent back to Horse Cave, Kentucky for burial in the family plot.”

On August 6, 1950, the day before Charlie Moran II was killed in action, his wife Gene wrote a letter to Charlie's family, and Charlie added a short page at the end. A portion of the letter is as follows:

“Charlie has been flying more lately. He has about 20 missions now with nearly 77 hours of flying time since this thing started. Too, his hours have changed. Before, he was on from 8:00 till 8:00 (24 hours), now its noon till noon on - then the same off. The first of the week he flew nite, then morning missions as they found extra good targets. There's a lot of movement of troops and supplies that the F-82's blasted. They don't get credit for doing too much. Can't understand why. Some targets that Charlie and other 82's hit were reported to have been blasted by B-29's and other time by Australian F-51's. Sure burns me!! Of course all you hear of is the jets. They have more here than you can imagine and only 10 82's. The jets fly a lot because there is so many. They can only stay flying 2 or 2 ½ hours, and can only take 2 rockets and 6 50 calb. with them. An 82 stays up 5 or 6 hours and takes 10 rockets and 2 500lb bombs – so you can see one 82 mission is worth several jet missions. Still you seldom hear of the F-82 goings on. Oh well !!! The first day Charlie flew and found the good targets he was so pepped up when he came home. He flew nite, the morning mission then asked to go back that afternoon, but they wouldn't let him. He strafed so low that he came back with several holes in his plane and his windshield shattered. Twice now he has

taken off in front of another 82 and a rocket has been discharged accidentally. They have whizzed past Charlie's plane and exploded in a rice paddy at the end of the runway. They think it is so funny and nearly kill themselves laughing every time they tell about it!

"Charlie has never bailed out – we have told you all that has happened. He landed at a friendly field that day. The North Koreans later took the field. Yes, the long missions are trying for him, but his missions are shorter now since he doesn't have to go far to hit the enemy. Charlie went to fly so I'll say bye for now."

On August 9, 1950 Gene wrote the following:

"Dearest Mom and All, Sorry we didn't get to talk longer last nite, and that I couldn't hear you. That was Lt. Bobo that talked to you. It was nearly 8:00 o'clock p.m. here. Col. Price, the base commander, came here at 7:30 a.m. that morning and told me about Charlie being missing. Just as soon as I heard him saying 'Is this Lt. Moran's quarters?' I knew something was wrong. You can imagine how I felt and I know how you must be feeling now. Yesterday morning I felt real bad but the boys in the sqdn. have encouraged me so much that I feel better now.

"He was going on a night intruder mission. One plane goes to the target and passes another going in as they're coming back. Lt. Meyers was Charlie's radar observer. His wife and two children are in Ashiya. Charlie left here on the mission at 9:30 p.m. Monday nite. Bobo was the pilot of the next plane. He tried to contact Charlie on the way over, but couldn't, so just thought his radio was out. The mission was short – only 2 ½ hrs, so when Charlie was 45 minutes overdue the boys were alerted to hunt for him. Bobo said he didn't see any fire or anything to indicate a crash that nite. The next morning two F-82's hunted four hours in the morning and four hours in the afternoon. Air Sea Rescue Sqdn has been hunting too. They have "covered the whole area where Charlie was supposed to go. They have hunted all yesterday and today and have found no trace of a wreckage or anything. They seem to think its good not to find the plane – then maybe he had something wrong with his plane and went over the water to ditch it. I have so much hope that he will be found, but I pray it's soon. I really thought they would have found him by now. I am being as brave as I can because I do have so much hope, but don't know how long it will last. I can't picture a life without him! Oh, if I just knew what happened and that he's all ok.

"They say I can stay 30 days. I hope by then he will be safely back. If not I don't see how I can leave here without him or knowing what's wrong. I feel so sorry for Tommy, yesterday he couldn't understand why I was crying and when I stopped he seemed so glad and said 'You happy now, Mommie? You no cry anymore?' He was so used to Charlie being gone so much that he doesn't realize what's going on now.

"Charlie flew on our anniversary and spent the nite on the line guess I'll have a miserable birthday Saturday unless I hear Charlie is okay. Just thought – Charlie was lost on Pearl's birthday.

"Yes, Charlie had an American flag and sign in Korea(n) but he carried it in his pocket instead of on his back. Also he had on a survivor jacket that has about everything in it. It had some food, water maker, fishing line, matches, flares, bug repellent, hat and gloves. Oh, just anything you can think of. They also have to carry two gold pieces worth \$8.50 each that Koreans recognize and will accept as money. Also he had 8 packages of cigarettes that can be used for money over there. "Then a gun and a lifeboat strapped on him besides the parachute. These things make me feel a little better.

"Yes I have been working at the canteen and making sandwiches. Also signed up to help the Red Cross and was typed for blood in case they need me.

"People have been coming in and out all day so I'm just now finishing this letter at 9:00 p.m. Wednesday. Still have no news.

"Bobo said tonite the 68<sup>th</sup> had so few planes that no more day missions would be flown in the 82 and only important nite missions. That means they will be on alert every other nite and off the rest of the time. Wish Charlie were here to enjoy this 'let up'.

“I can’t keep from wondering where he is right now, what he’s doing, if he’s hungry, tired or hurt. They tell me not to think about those things, but how can I keep from it.

“I will write often and will let you know if I hear any good news. Love you lots. Gene, Charlie and Tommy.”

After that part of Korea where Charlie was flying when he disappeared was retaken by Allied forces, local Koreans aided American personnel in 1952 in recovering part of Charlie’s aircraft and his remains. The remains were returned to the U.S., and interred in the Moran Family Lot in the Horse Cave cemetery on May 30, 1952. (The letters above along with photographs and other information were furnished by Charlie’s sister, Ann (Moran) McCurry.)

More About CHARLIE BARTHELL MORAN II:  
Burial: Horse Cave Cemetery, Hart County, Kentucky  
Military service: Lieutenant, U.S. Army Air Force

Child of CHARLIE MORAN and LILLIAN USRY is:

16. i. **TOM WILLIAM<sup>7</sup> MORAN**, b. June 10, 1947, Biloxi, Mississippi.

**12. SALLIE ANN<sup>6</sup> MORAN** (*TOM MCGEE<sup>5</sup>, ETTA PEARL<sup>4</sup> MCGEE, GEORGE PIERCE<sup>3</sup>, JOHN SIMPSON<sup>2</sup>, JOHN<sup>1</sup>*) was born September 16, 1930 in Glasgow, Barren County, Kentucky. She married **JAMES WALTER MCCURRY** June 07, 1952 in Horse Cave, Hart County, Kentucky, son of WALTER MCCURRY and MARY HUDDLESTON. He was born April 18, 1930 in Benham, Harlan County, Kentucky.

More About JAMES WALTER MCCURRY:  
Occupation: Engineer

Children of SALLIE MORAN and JAMES MCCURRY are:

17. i. **JAMES BARTHELL<sup>7</sup> MCCURRY**, b. March 20, 1954, Dayton, Miami County, Ohio.
18. ii. **ROBERT DAVID MCCURRY**, b. April 27, 1955, Wright-Patterson Air Force Base, Ohio.
- iii. **DON RICHARD MCCURRY**, b. February 06, 1957, Wright-Patterson Air Force Base, Ohio; m. **CLAIRE CORLITO**, August 16, 1986, Rolling Hills Estates, Los Angeles, California; b. December 05, 1961, Los Angeles, California.
19. iv. **SALLY LOU MCCURRY**, b. December 25, 1959, Torrance, Los Angeles County, California.
20. v. **ANN MARI MCCURRY**, b. April 17, 1962, Torrance, Los Angeles County, California.

**13. JUDY RHEA<sup>6</sup> FARRIS** (*FRANCES LEE<sup>5</sup> MCGEE, JOHN HOUSTON<sup>4</sup>, GEORGE PIERCE<sup>3</sup>, JOHN SIMPSON<sup>2</sup>, JOHN<sup>1</sup>*) was born in Hart County, Kentucky. She married ? **WELLS**.

Children of JUDY FARRIS and ? WELLS are:

- i. **JANE LEE<sup>7</sup> WELLS**.
- ii. **BETSY WELLS**.
- iii. **MARY ROGERS WELLS**.

**14. LIVING<sup>6</sup> MCGEE** (*RHEA BARTHELL<sup>5</sup>, JOHN HOUSTON<sup>4</sup>, GEORGE PIERCE<sup>3</sup>, JOHN SIMPSON<sup>2</sup>, JOHN<sup>1</sup>*) was born in Horse Cave, Hart County, Kentucky. She married **LIVING TOWERY** in Cave City, Barren County, Kentucky, son of OLIS TOWERY and PERCIE HOLLAND. He was born in Boydsville, Tennessee

Child of LIVING MCGEE and LIVING TOWERY is:

- i. **LIVING<sup>7</sup> TOWERY**

**15. JOHN SCOTT<sup>6</sup> MCGEE** (*JOHN HOUSTON<sup>5</sup>, JOHN HOUSTON<sup>4</sup>, GEORGE PIERCE<sup>3</sup>, JOHN SIMPSON<sup>2</sup>, JOHN<sup>1</sup>*) was born May 04, 1951 in Horse Cave, Hart County, Kentucky. He married **ANN REINHARDT** June 22, 1985. She was born April 16, 1956.

More About JOHN SCOTT MCGEE:

Occupation: Medical Doctor

Children of JOHN MCGEE and ANN REINHARDT are:

- i. **CAROLYN RHEA<sup>7</sup> MCGEE**, b. October 02, 1985.
- ii. **JULIANNE THOMAS MCGEE**, b. November 16, 1986.
- iii. **SOPHIA PAULINE MCGEE**, b. April 12, 1995.

#### *Generation No. 7*

**16. TOM WILLIAM<sup>7</sup> MORAN** (*CHARLIE BARTHELL<sup>6</sup>, TOM MCGEE<sup>5</sup>, ETTA PEARL<sup>4</sup> MCGEE, GEORGE PIERCE<sup>3</sup>, JOHN SIMPSON<sup>2</sup>, JOHN<sup>1</sup>*) was born June 10, 1947 in Biloxi, Mississippi. He met (1) **LORETTA BREEDLOVE** bef. 1975. He married (2) **DEBRA SUSAN VICK** 1975 in the state of Texas, daughter of WILLIAM VICK and MARY ALVIS. She was born October 19, 1953 in Dallas, Dallas County, Texas.

Child of TOM MORAN and LORETTA BREEDLOVE is:

21. i. **RUSTY STANTON<sup>8</sup> BREEDLOVE**, b. July 22, 1975, Dallas, Dallas County, Texas.

Children of TOM MORAN and DEBRA VICK are:

22. ii. **ASHLEA RENEE<sup>9</sup> MORAN**, b. July 19, 1976, Dallas, Dallas County, Texas.
23. iii. **CHARLIE BARTHELL MORAN III**, b. September 17, 1980, Tyler, Texas.

**17. JAMES BARTHELL<sup>7</sup> MCCURRY** (*SALLIE ANN<sup>6</sup> MORAN, TOM MCGEE<sup>5</sup>, ETTA PEARL<sup>4</sup> MCGEE, GEORGE PIERCE<sup>3</sup>, JOHN SIMPSON<sup>2</sup>, JOHN<sup>1</sup>*) was born March 20, 1954 in Dayton, Miami County, Ohio. He married **WILDA KAY TAYLOR** July 18, 1978 in Rancho Palos Verdes, Los Angeles, California, daughter of JAMES TAYLOR and IDA. She was born August 25, 1953 in the state of Tennessee.

Child of JAMES MCCURRY and WILDA TAYLOR is:

- i. **JAMES MATTHEW<sup>8</sup> MCCURRY**, b. January 10, 1985, Houston, Harris County, Texas.

**18. ROBERT DAVID<sup>7</sup> MCCURRY** (*SALLIE ANN<sup>6</sup> MORAN, TOM MCGEE<sup>5</sup>, ETTA PEARL<sup>4</sup> MCGEE, GEORGE PIERCE<sup>3</sup>, JOHN SIMPSON<sup>2</sup>, JOHN<sup>1</sup>*) was born April 27, 1955 in Wright-Patterson Air Force Base, Ohio. He married **LYNETTE SALTER** December 31, 1977 in Seabrook, Harris County, Texas, daughter of CHARLES SALTER and MARGE. She was born July 06, 1954 in the state of Texas.

Children of ROBERT MCCURRY and LYNETTE SALTER are:

- i. **DUSTIN BARRETT<sup>8</sup> MCCURRY**, b. December 06, 1986, Corpus Christi, Texas.
- ii. **REBEKAH ANN MCCURRY**, b. January 21, 1989, Corpus Christi, Texas.

**19. SALLY LOU<sup>7</sup> MCCURRY** (*SALLIE ANN<sup>6</sup> MORAN, TOM MCGEE<sup>5</sup>, ETTA PEARL<sup>4</sup> MCGEE, GEORGE PIERCE<sup>3</sup>, JOHN SIMPSON<sup>2</sup>, JOHN<sup>1</sup>*) was born December 25, 1959 in Torrance, Los Angeles County, California. She married **STEVEN CHARLES BRODHEAD** September 01, 1984 in Torrance, Los Angeles County, California, son of JOHN BRODHEAD and SALLY. He was born November 23, 1955 in La Canada, Los Angeles County, California.

Children of SALLY MCCURRY and STEVEN BRODHEAD are:

- i. **SARAH ELIZABETH<sup>8</sup> BRODHEAD**, b. October 11, 1985, Torrance, Los Angeles County, California.
- ii. **KATHERINE ANN BRODHEAD**, b. February 19, 1987, Torrance, Los Angeles County, California.
- iii. **JOHN RYAN BRODHEAD**, b. June 24, 1990, Torrance, Los Angeles County, California.

**20. ANN MARI<sup>7</sup> MCCURRY** (*SALLIE ANN<sup>6</sup> MORAN, TOM MCGEE<sup>5</sup>, ETTA PEARL<sup>4</sup> MCGEE, GEORGE PIERCE<sup>3</sup>, JOHN SIMPSON<sup>2</sup>, JOHN<sup>1</sup>*) was born April 17, 1962 in Torrance, Los Angeles County, California. She married **JOHN PETER ALVIN, JR.** July 31, 1999 in Redondo Beach, California, son of JOHN ALVIN and CHARLOTTE HICKS.

Children of ANN MCCURRY and JOHN ALVIN are:

- i. **PARKER JOHN<sup>8</sup> ALVIN**, b. September 14, 2000, Torrance, Los Angeles County, California.
- ii. **SPENCER DEAN ALVIN**, b. July 01, 2003, Torrance, Los Angeles County, California.

#### *Generation No. 8*

**21. RUSTY STANTON<sup>8</sup> BREEDLOVE** (*TOM WILLIAM<sup>7</sup> MORAN, CHARLIE BARTHELL<sup>6</sup>, TOM MCGEE<sup>5</sup>, ETTA PEARL<sup>4</sup> MCGEE, GEORGE PIERCE<sup>3</sup>, JOHN SIMPSON<sup>2</sup>, JOHN<sup>1</sup>*) was born July 22, 1975 in Dallas, Dallas County, Texas. He married **KAMBREE DAWN PEOPLES** November 16, 2000 in Plano, Texas. She was born June 16, 1978.

Children of RUSTY BREEDLOVE and KAMBREE PEOPLES are:

- i. **TY STANTON<sup>9</sup> BREEDLOVE**, b. May 22, 2002, Plano, Texas.
- ii. **EMMA RENEE BREEDLOVE**, b. August 02, 2006, Plano, Texas.

**22. ASHLEA RENEE<sup>8</sup> MORAN** (*TOM WILLIAM<sup>7</sup>, CHARLIE BARTHELL<sup>6</sup>, TOM MCGEE<sup>5</sup>, ETTA PEARL<sup>4</sup> MCGEE, GEORGE PIERCE<sup>3</sup>, JOHN SIMPSON<sup>2</sup>, JOHN<sup>1</sup>*) was born July 19, 1976 in Dallas, Dallas County, Texas. She married **BRETT DAVIDSON THORN** November 17, 2001 in Rowlett, Texas. He was born June 30, 1975.

Children of ASHLEA MORAN and BRETT THORN are:

- i. **CHAYSE ISABELLE<sup>9</sup> THORN**, b. April 11, 2003, Plano, Texas.
- ii. **WYATT DAVIDSON THORN**, b. December 17, 2004, Plano, Texas.

**23. CHARLIE BARTHELL<sup>8</sup> MORAN III** (*TOM WILLIAM<sup>7</sup>, CHARLIE BARTHEL<sup>6</sup>, TOM MCGEE<sup>5</sup>, ETTA PEARL<sup>4</sup> MCGEE, GEORGE PIERCE<sup>3</sup>, JOHN SIMPSON<sup>2</sup>, JOHN<sup>1</sup>*) was born September 17, 1980 in Tyler, Texas. He married **RAKSA BOUR** June 11, 2005 in Rowlett, Texas. She was born October 19, 1980.

Child of CHARLIE MORAN and RAKSA BOUR is:

- i. **MCKENNA YARIN<sup>9</sup> MORAN**, b. August 09, 2006, Garland, Texas.





**1. George Pierce McGee (1856-1937)**



**2. Rosa Lee Vance (1861-1934)**



**3. George and Rosa McGee's residence located on Church Street in Horse Cave, Kentucky**





**4. George P. McGee (standing) with two of his sons.**



**5. Rosa (Vance) McGee and a young friend.**



**6. George P. McGee residence at Horse Cave in later years after structural renovations.**





**7. Etta Pearl McGee (1880-1958)**



**8. Charlie B. and Pearl (McGee) Moran**



**9. Photo at 1927 World Series: (l to r) Roger Hornsby (St. Louis Mgr.), Victor J. Miller (Mayor of St. Louis), Charles Lindberg, Charlie Moran (umpire), and Art Reinhart (St. Louis pitcher). Charlie was telling Lindberg the player's names, and Lindberg was presenting each of them with their World Series ring.**



**10. Lucian Bascom McGee (1884-1917)**



**11. James Louis McGee (1886-1943)**



**12. John Houston McGee, Sr. (1888-1977)**



**13. Edd Pierce McGee (1892-1959)**



**14. John Houston McGee, Sr. and his wife, Mary Agnes Rhea – 1946**



**15. Houston McGee's grocery store at Horse Cave, Kentucky.**





**16. Perniecia Jane Pritchard (1895-1955) was the wife of Edd McGee**



**17. Louis McGee and his wife, Jennie Page**



**18. Louis McGee was a pharmacist in Horse Cave, Kentucky**



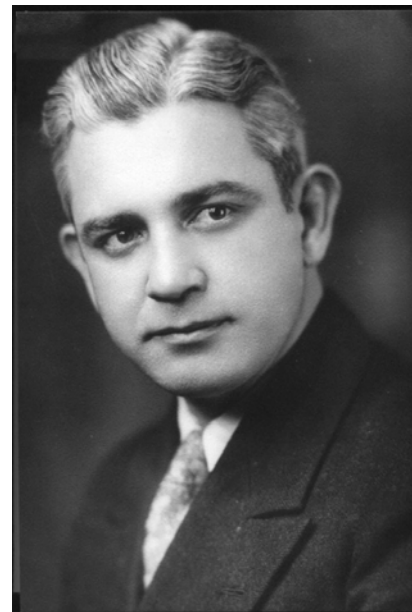
19. John Houston McGee, Sr.



20. Lucian B. McGee



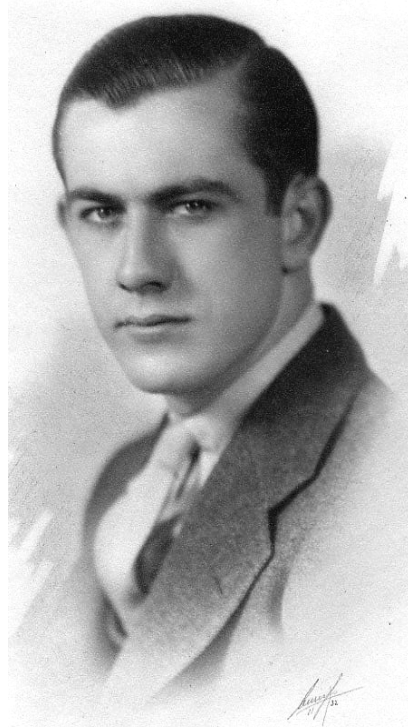
21. Mary Agnes Rhea, wife of Houston McGee, Sr.



22. Tom McGee Moran



23. Shirley Vance McGee



24. Thomas Page McGee



25. Frances Lee McGee



26. Rhea Barthell McGee ca 1919





27. Rhea Barthell McGee



28. Rhea B. McGee with daughter, Gene Rhea



29. Employees of the Horse Cave post office celebrate Christmas. J. Houston McGee, Jr. is standing, second from left, and his wife, Kitsey is far right. Their son, John Scott is in front row, left. ca 1955



**30. John Houston McGee, Jr.**



**31. Houston McGee, Jr. and wife, Mary Katherine Scott**



**32. Tom Moran family (l to r) Charlie B. Moran II, Sallie (Bryant) Moran and Sallie Ann Moran**





**33. Charlie B. Moran II photographed in flight gear during pilot training - 1943**



**34. Charlie Moran home on leave in Horse Cave, Ky. with his mother, Sallie, and sister, Ann.**



**35. In the Korean War Charlie flew the F-82G "Twin Mustang," an all-weather fighter-bomber with the pilot in the left cockpit and the radar observer in the right cockpit. This photo of Charlie was taken in flight over Japan by his radar observer.**

